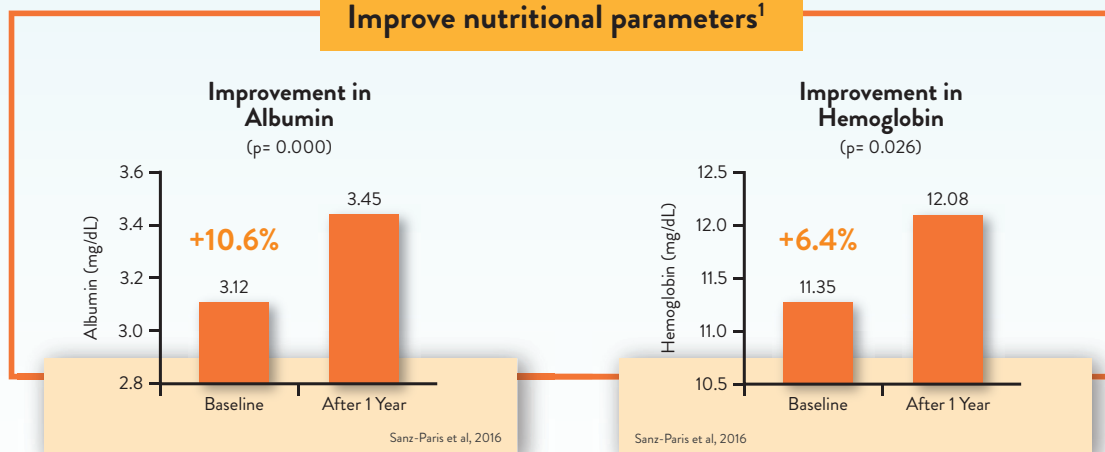


IMPROVE OUTCOMES WITH

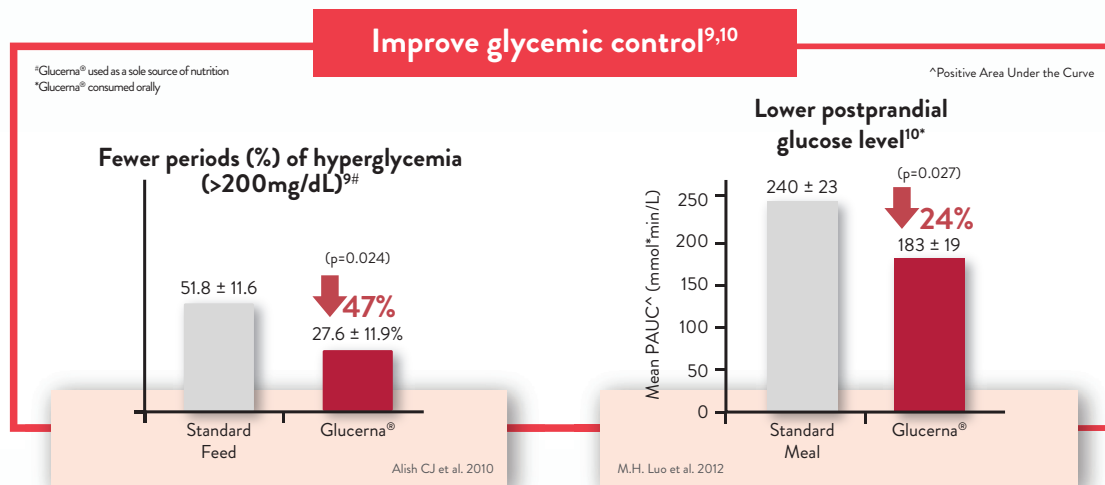


Your nutrition prescription will make a difference.

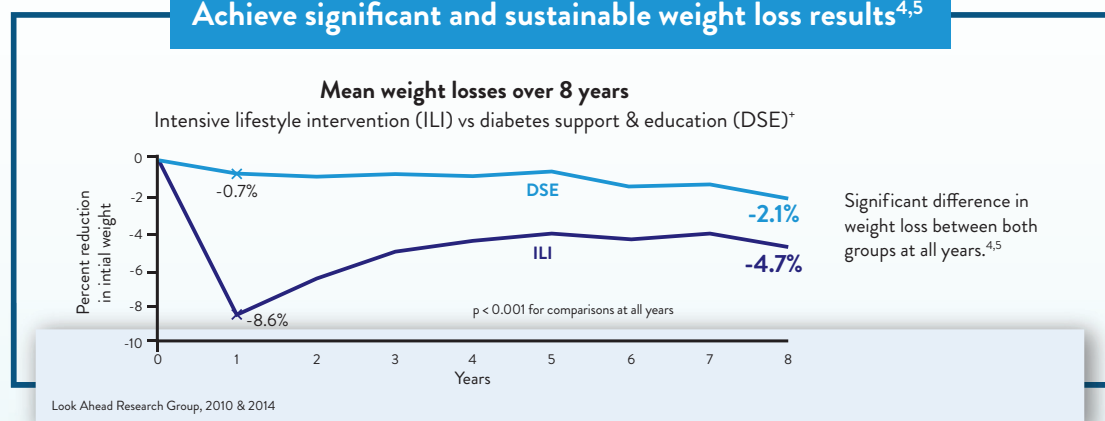
Improve nutritional parameters¹



Improve glycemic control^{9,10}



Achieve significant and sustainable weight loss results^{4,5}



^{*}The Action for Health in Diabetes (Look AHEAD) is a randomized trial comparing the effects of Intensive Lifestyle Intervention (ILI) focused on weight loss achieved through healthy eating and increased physical activity versus a control condition of Diabetes Support and Education (DSE) in overweight and obese individuals with type 2 diabetes. As part of the ILI program, DSF like Glucerna®, are used as meal replacements.

References

1. Sanz-Paris, A. et al. Nutrients. 2016;8:153.
2. Alish, C.J. et al. Diabetes Technol Ther. 2010;12:419–425.
3. Luo, M. et al. Journal of Diabetes Mellitus, 2012(2):214-220.
4. The Look AHEAD Research Group. Obesity. 2014; 22:5–13.
5. The Look AHEAD Research Group. Arch Int Med. 2010; 170:1566–1575.



Improving lives with nutrition

EVERYDAY COMPLETE, BALANCED NUTRITION FOR ADULTS

Balanced proportions of protein, carbohydrate and fat with 28 vitamins and minerals. Lactose-Free. Gluten-Free.

ENSURE® LIFE Build Your Strength



400G & 850G 850G



400G & 850G 850G

- 1.0 kcal/ml
- 8.6g protein/serve
- 2.3g fiber/serve
- For sole source of nutrition or supplementation
- Vanilla, strawberry, chocolate & wheat flavours

ENSURE® NUTRIVIGOR Get Stronger



850G

- 1.0 kcal/ml
- 9.0g protein/serve
- 1.7g fiber/serve
- Enhanced with Acti-HMB
- High in Vitamin D
- For supplemental nutrition
- Vanilla flavour

ENSURE® PLUS ADVANCE Get Stronger On-The-Go



220ML

- 1.5 kcal/ml
- High in protein (20g/serve)
- 1.5g CaHMB/serve (Calcium β -hydroxy- β -methylbutyrate)
- For supplemental nutrition
- Vanilla flavour

ENSURE® NUTRITION SHAKE Strength-On-The-Go



237ML

- 1.0 kcal/ml
- 9.0g protein/serve
- For supplemental nutrition
- Vanilla flavour

ENSURE® LIQUID For Daily Nutrition



250ML

- 1.0 kcal/ml
- 9.3g protein/serve
- Low residue
- For sole source of nutrition or supplementation
- Vanilla & strawberry flavours

ENSURE® PLUS For Increased Nutritional Needs



200ML

- 1.5 kcal/ml
- 12.5g protein/serve
- Low residue
- For sole source of nutrition or supplementation
- Vanilla, strawberry, raspberry, chocolate, coffee and savoury flavours



200ML 220ML

ENSURE® COMPACT NEW



125ML

- 300 kcal in low volume
- 12.5g protein
- Improves compliance
- For supplemental nutrition

ABBOTT LABORATORIES (S) PTE LTD
3 Fraser Street, #23-28
DUO Tower
Singapore 189352

For more information,
contact your Abbott Sales
Representative or visit:



Abbott Nutrition
Information Centre
ANIC.sg

Advancing Knowledge, Enhancing Patient Care

SPECIALIZED NUTRITION FOR PATIENTS WITH THERAPEUTIC NEEDS

Modified proportions of protein, carbohydrate and fat with 28 vitamins and minerals. Lactose-Free. Gluten-Free.

DIABETES

GLUCERNA® TRIPLE CARE



400/850G 230ML

- Low glycemic index (GI)
- Slow-release carbohydrate
- 1.0 kcal/ml
- For sole source of nutrition (powder) or supplementation (powder & liquid)
- Vanilla flavour

GLUCERNA® PLUS 1.5KCAL



220ML

- Low glycemic index (GI)
- Slow-release carbohydrate
- 1.5 kcal/ml
- High in protein (16.5g/serve)
- For sole source of nutrition or supplementation
- Coffee flavour

GLUCERNA®



250ML

- Isotonic formula
- Low glycemic index (GI)
- 1.0 kcal/ml
- 10g protein/serve
- For sole source of nutrition or supplementation
- Vanilla flavour

CHRONIC KIDNEY DISEASE

NEPRO® HP For Dialysis Patients



220ML

- High in protein (17.8g/serve)
- Low potassium, phosphorus & sodium
- Slow-release, low-GI carbohydrate complex
- 1.8 kcal/ml
- For sole source of nutrition or supplementation
- Vanilla flavour

NEPRO® LP For Non-Dialyzed Patients



220ML

- Lower* in protein (9.9g/serve)
- Low potassium, phosphorus & sodium
- Slow-release, low-GI carbohydrate complex
- 1.8 kcal/ml
- For sole source of nutrition or supplementation
- Vanilla flavour

CANCER-INDUCED WEIGHT LOSS

PROSURE®



380G

220 ML

- High in protein (16g/serve - powder; 14.6g/serve - liquid)
- With EPA (Eicosapentaenoic acid)
- Lower in fat#
- 1.3 kcal/ml
- For supplemental nutrition
- Vanilla (liquid) & orange (powder) flavours

LONG TERM TUBE-FEEDING



237ML

JEVITY®

- Isotonic formula
- 3.4g fiber/serve
- With MCT (medium chain triglycerides)
- 1.0 kcal/ml
- 10.4g protein/serve
- For sole source of nutrition

CHRONIC OBSTRUCTIVE PULMONARY DISEASE



237ML

PULMOCARE®

- Lower# in carbohydrate
- 14.8g protein/serve
- Low glycemic index (GI)
- With MCT (medium chain triglycerides)
- 1.5 kcal/ml
- For sole source of nutrition or supplementation
- Vanilla flavour

*Compared to Nepro HP
#Compared to Ensure Plus

HELP YOUR PATIENTS LIVE LIFE STRONGER

The NOURISH study¹:

Investigated the impact of **Ensure[®] Plus Advance** high-protein oral nutritional supplement with **HMB** (β -hydroxy- β -methylbutyrate)



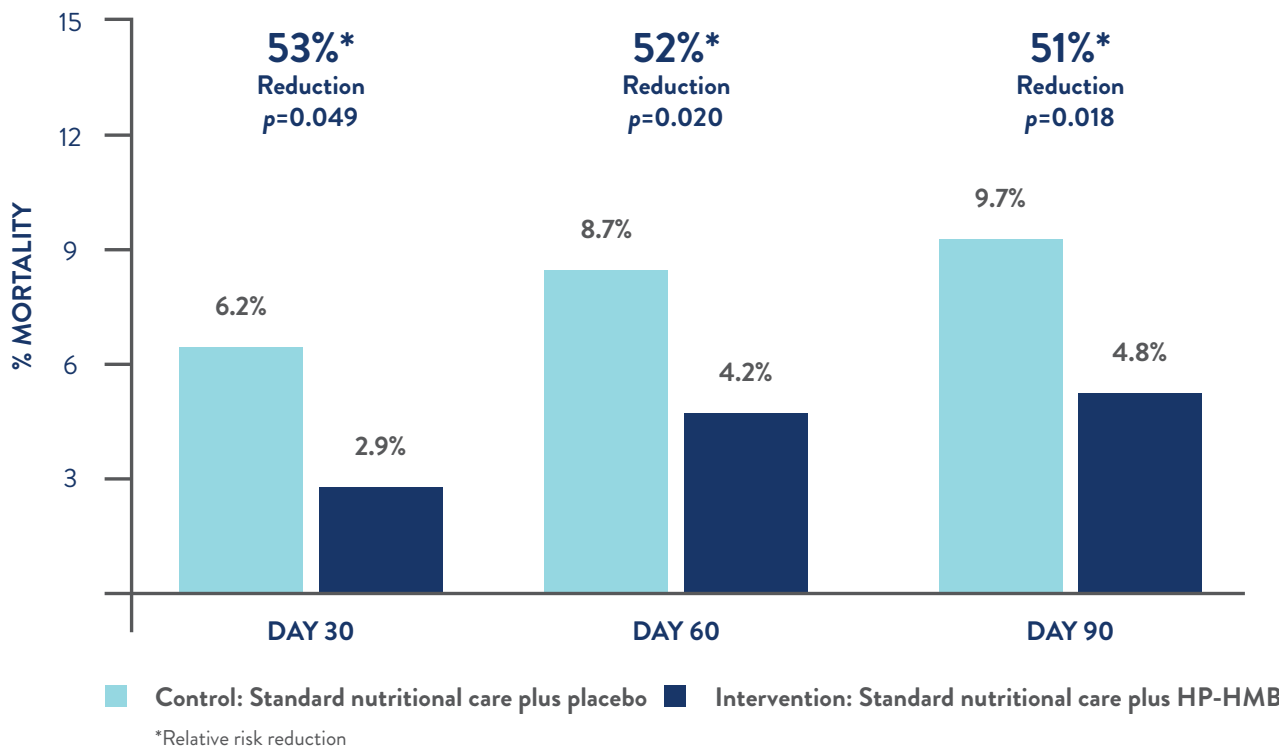
Objective: Evaluation of a high-protein oral nutritional supplement containing β -hydroxy- β -methylbutyrate (HP-HMB) on post discharge outcomes of non-elective readmission and mortality in malnourished, hospitalized older adults.

Patient population: 652 malnourished hospitalized patients aged ≥ 65 years with congestive heart failure, acute myocardial infarction, pneumonia, or chronic obstructive pulmonary disease were randomised to placebo or Ensure[®] Enlive (US brand of Ensure[®] Plus Advance), in addition to standard nutritional care.

Primary Composite Endpoint: Readmission or mortality through 90 days post-discharge



Ensure[®] Plus Advance Decreased Mortality Through 90 Days Post-Hospital Discharge¹



For Medical Professionals Only

Reference: 1. Deutz NE et al. Clin Nutr; 2016; 35:18-26



ENS170418